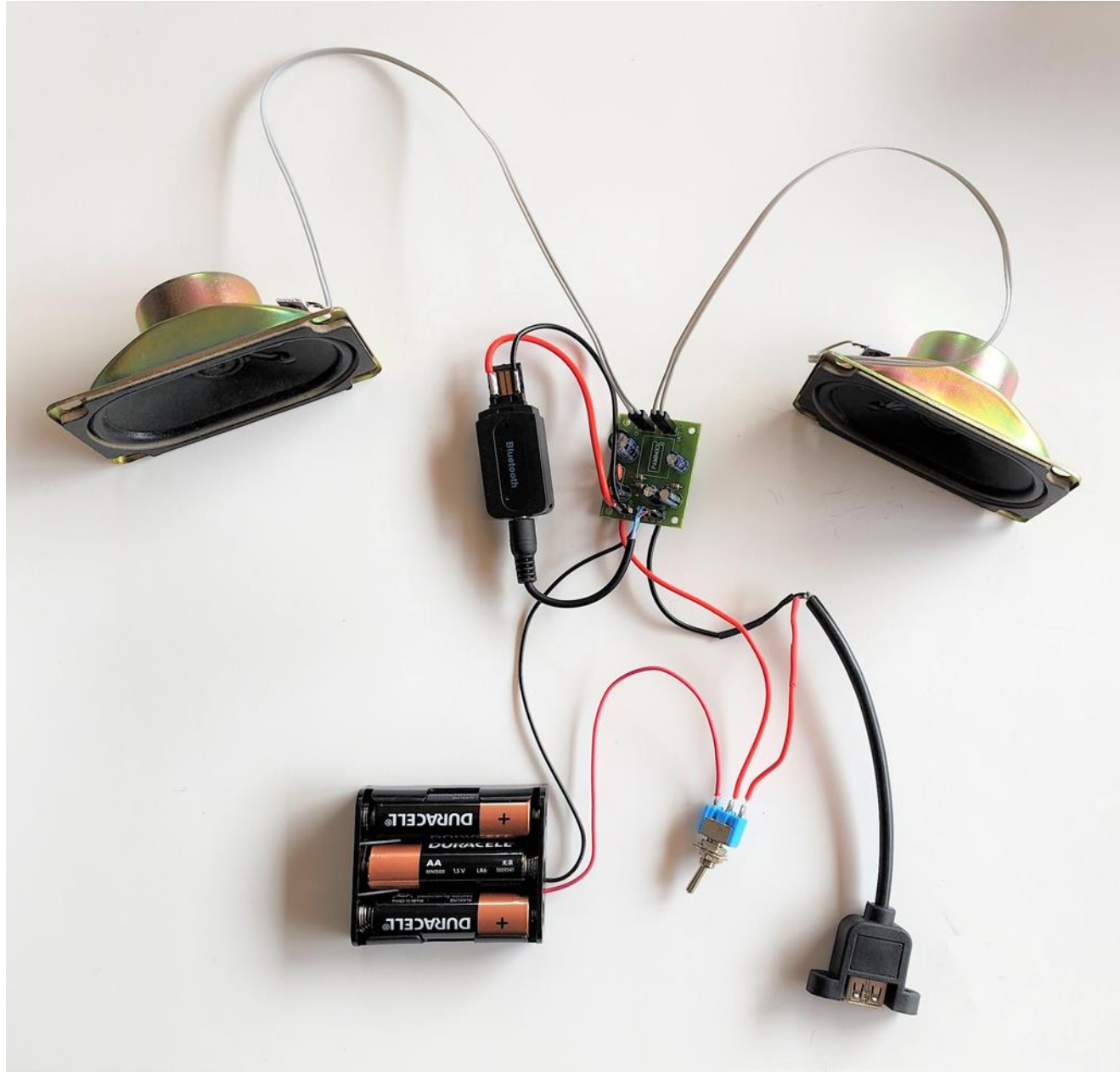


A self-paced Guide to assembling the KSBTS-02 Bluetooth Speaker Project .

What we are making



Refer to separate Documents for further detailed support:

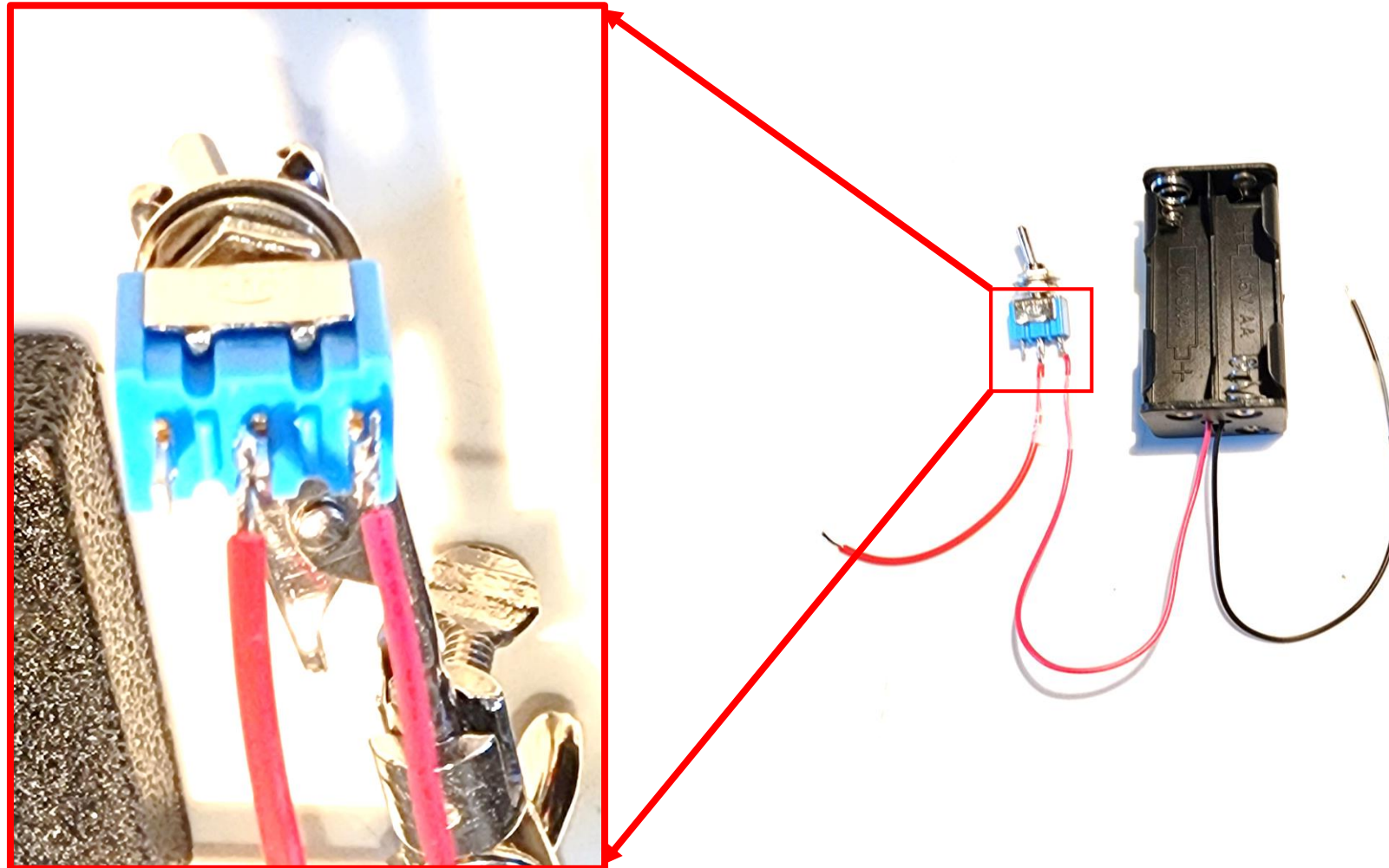
Doc 2 FK677 Student instructions ver 1.pdf

Doc 3 KSBT-02 Bluetooth Receiver Dongle (Teacher's Guide) - Ver 1 .pdf

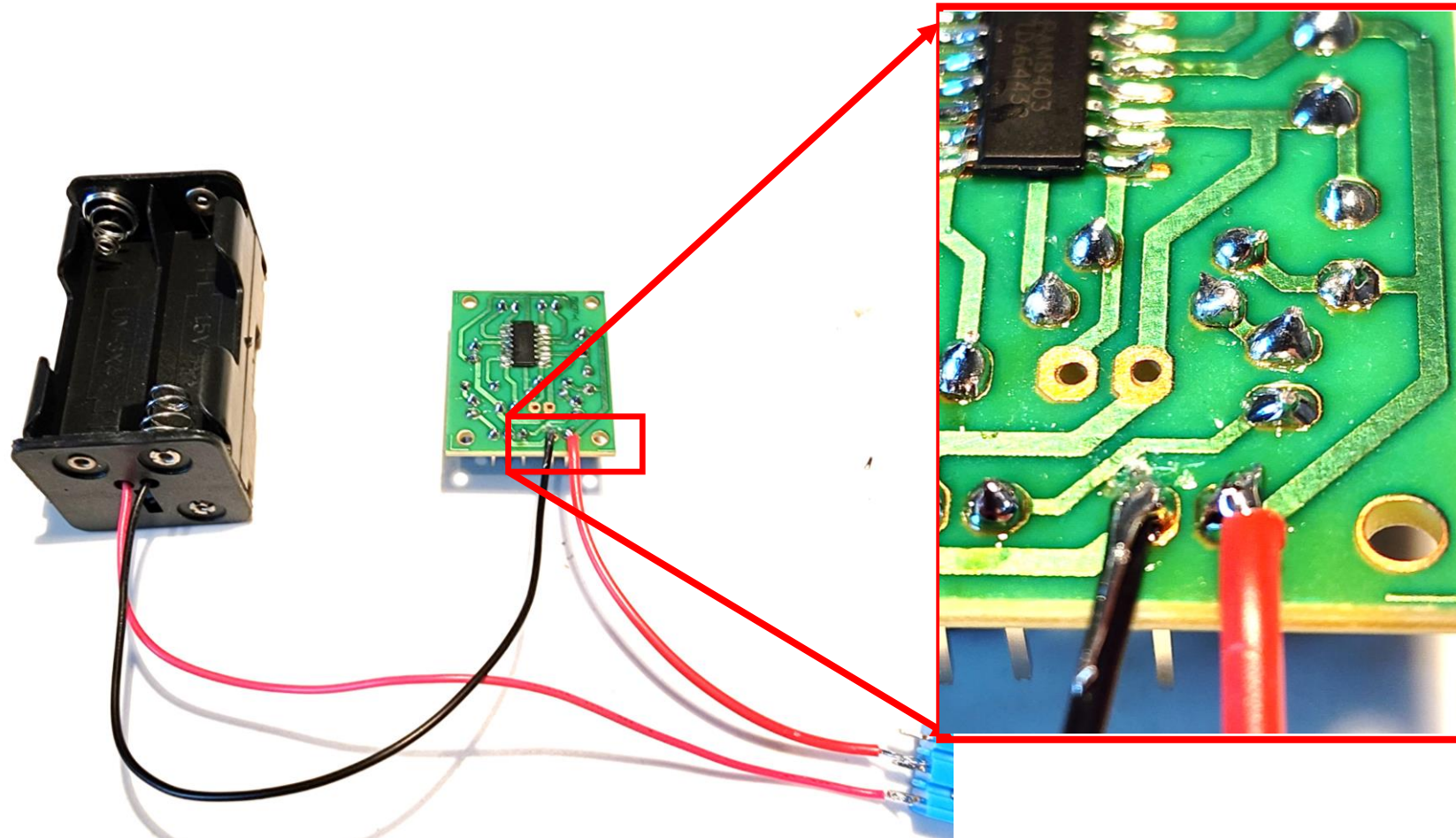
Doc 5 A self-paced guide to Wiring the ON-OFF switch .pdf

Doc 6 iPhone Connection Guide .pdf

Wires attached to the Switch.
Note red lead from Battery is usually switched.

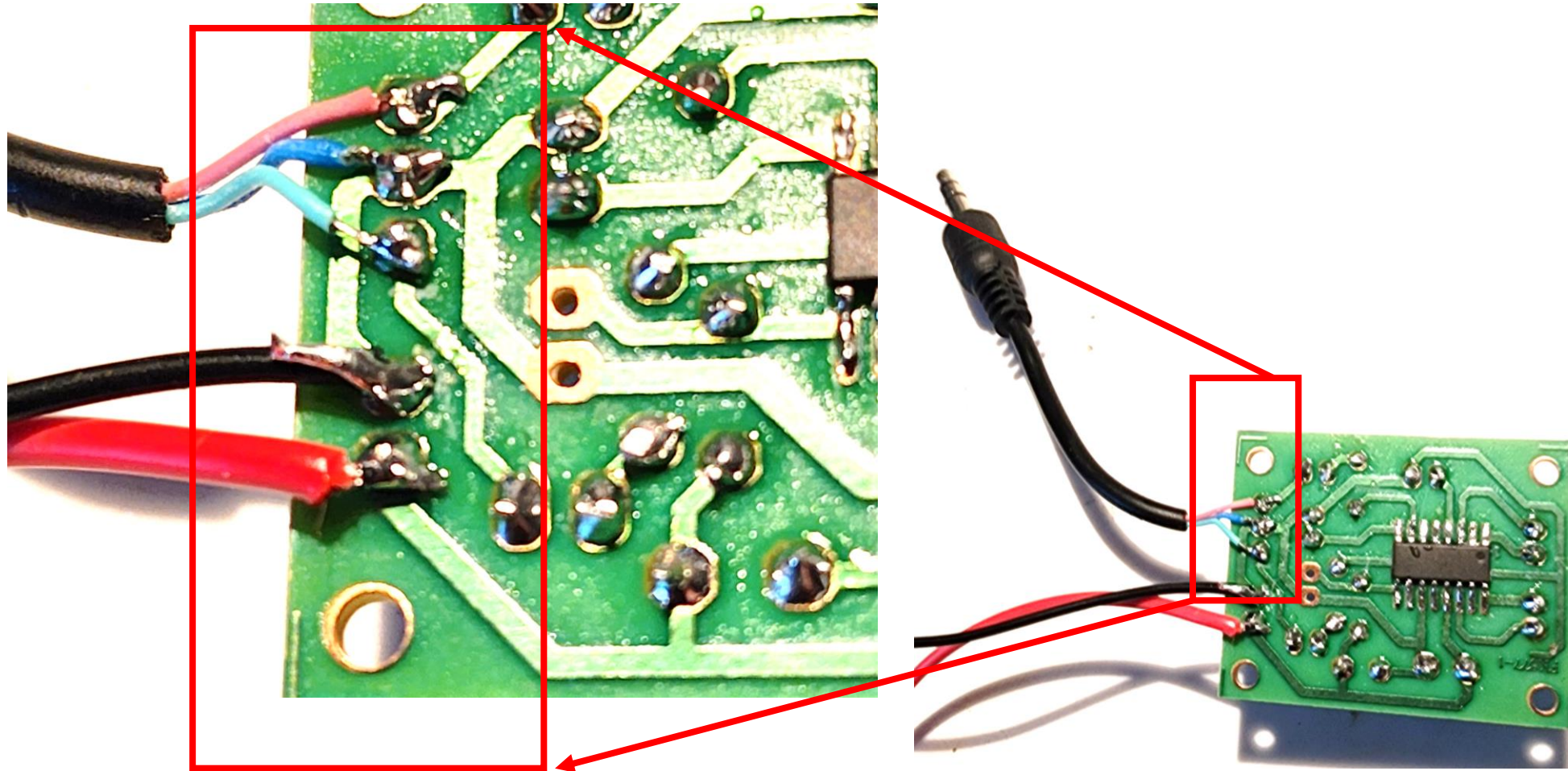


Supply wires now attached to FK677 Amplifier

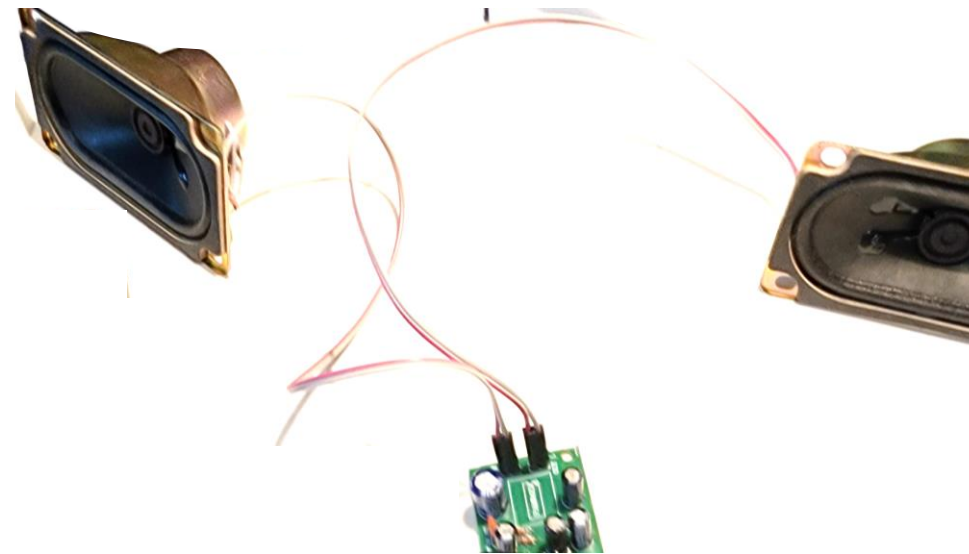


NOTE : When using 4 X AA Battery Holder for Power Supply, **ONLY** use rechargeable batteries !
For Alkaline Batteries, **ONLY** use a 3 X AA Battery Holder.

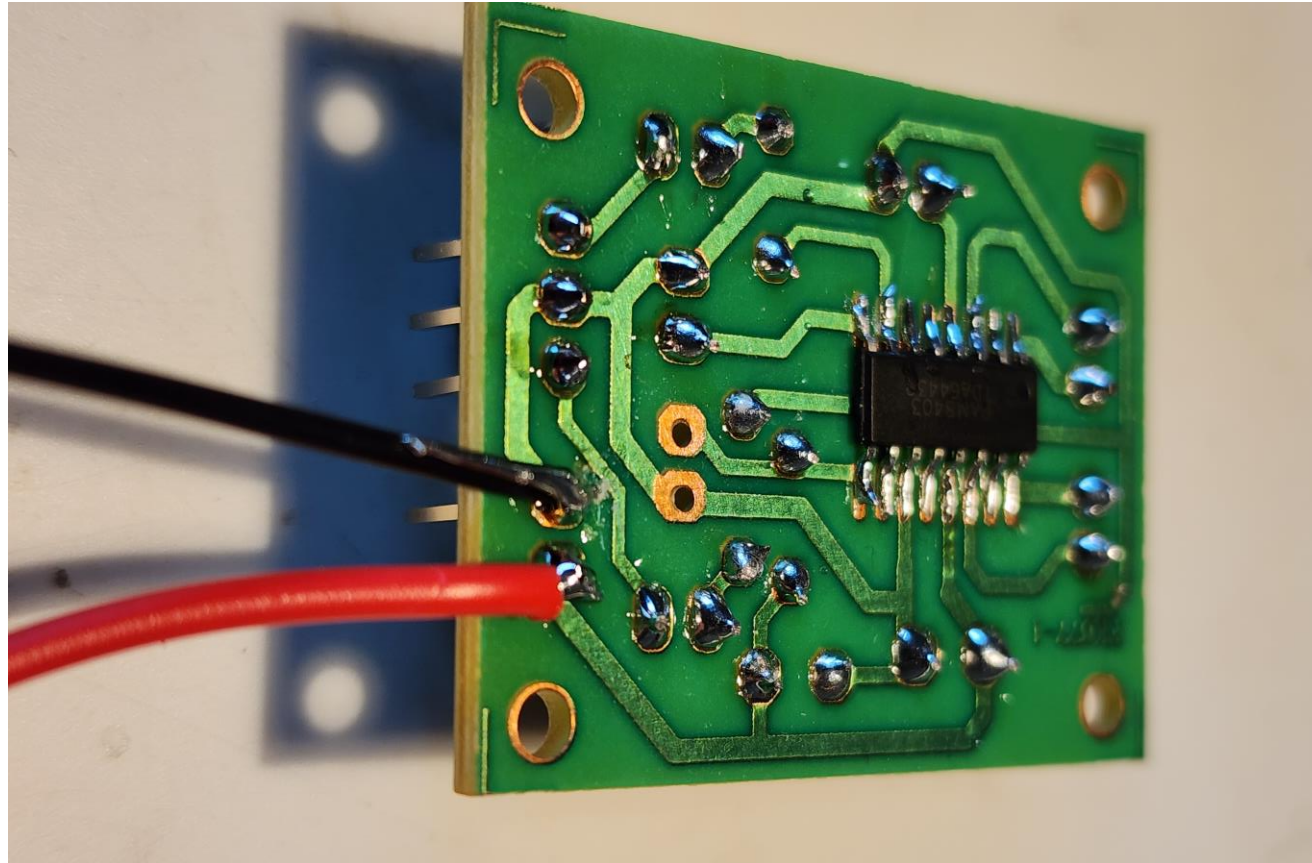
Audio input cable attached



Speaker wires now attached to FK677 Amplifier .

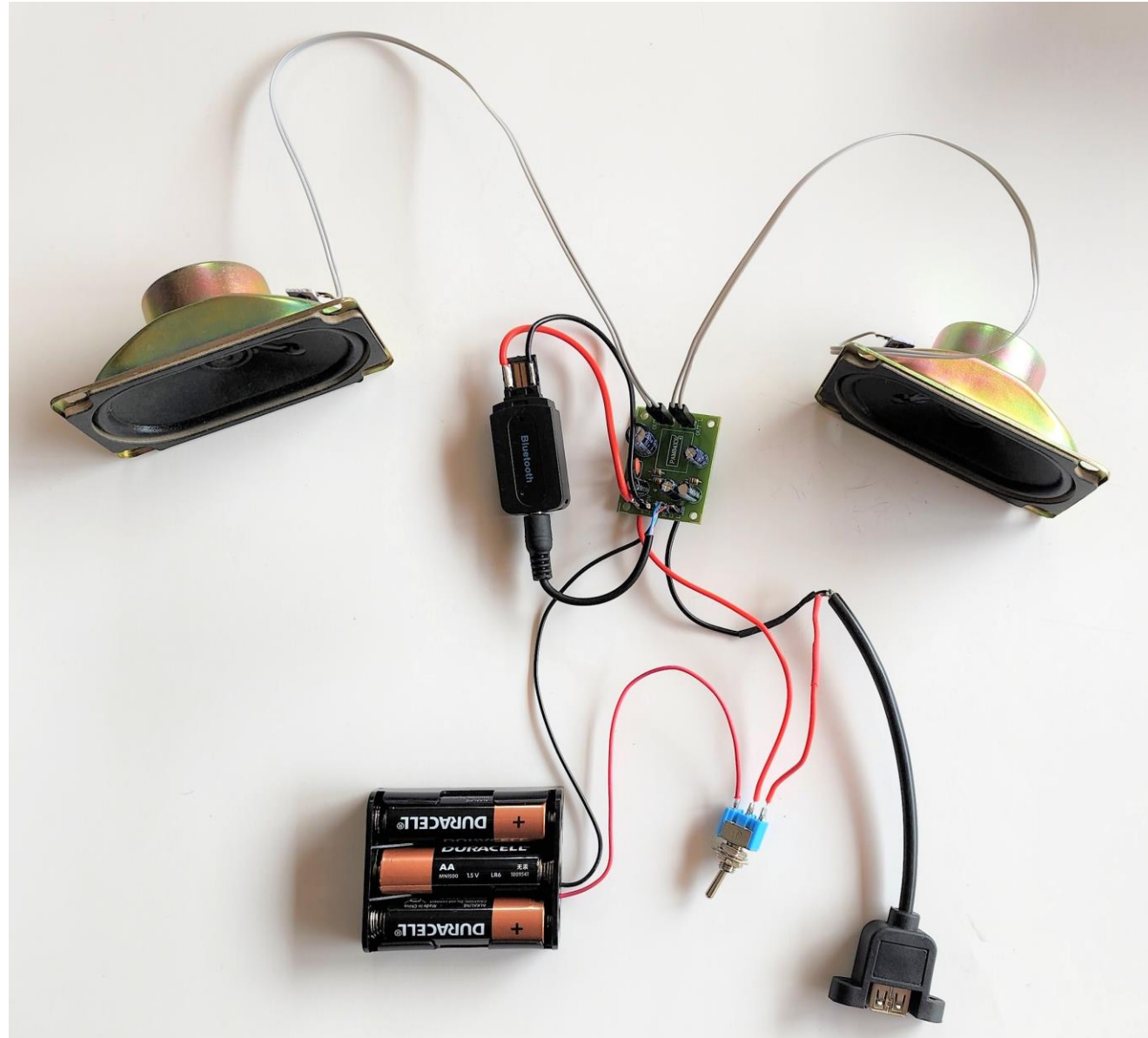


Attaching the DC Power wires to FK677 Amplifier .



Refer to “Doc 5 A self-paced guide to Wiring the ON-OFF switch .pdf”
for guidance on correct connections to the Power Switch.

Bluetooth Speaker Project ready for testing



Bluetooth module (KSBT-02 in this photo) connected